

# THE CHRONICLE

Volume 68,  
Issue 6, 7 & 8

Reach Up - Reach Out & Grow

SUMMER 2002

## “IN THE NAME OF JESUS”

*(Preaching series begins Sunday, September 8, 2002)*

The late Henry Nouwen wrote his insightful book, “In the Name of Jesus,” at the request of Gordon Cosby and Diana Chambers of Church of the Saviour in Washington, D.C. The book is based on Henry Nouwen’s presentations on Christian Leadership for the 21<sup>st</sup> century. Henry Nouwen authored several books on Christian spirituality and taught pastoral psychology, pastoral theology, and Christian spirituality at Harvard University for many years.

The book is based on his own spiritual journey as a follower of Jesus Christ. As Henry Nouwen initiated preparations for his presentations on Christian Leadership for the 21<sup>st</sup> Century, he discovered that he was in the midst of a major spiritual crisis. He states in the introduction to the book, “As I entered my fifties and was able to realize the unlikelihood of doubling my years, I came face to face with the simple question, ‘Did becoming older bring me closer to Jesus?’ After twenty-five years of priesthood, I found myself praying poorly, living somewhat isolated from other people, and very much preoccupied with burning issues. Everyone was saying that I was doing really well, but something inside was telling me that my success was putting my own soul in danger. I began to ask myself whether my lack of contemplative prayer, my loneliness, and my constantly changing involvement in what seemed most urgent were signs that the Spirit was gradually being suppressed. It was very hard for me to see clearly, and though I never spoke about hell or only jokingly so, I woke up one day with the realization that I was living in a very dark place and that the term “burnout” was a convenient psychological translation for spiritual death.”

In the depths of this moment Henry kept praying, “Lord, show me where you want me to go and I will follow you, but please be clear and unambiguous about it!” God spoke. Henry moved from Harvard to L’Arche, a community for mentally handicapped people. God called Henry to live among the poor in spirit. The Holy Spirit told Henry, “The people of L’Arche will heal you.” Henry’s healing is the spiritual foundation for his presentations on Christian leadership for a new century.

There are three spiritual pillars in Henry Nouwen’s presentation:

- From Relevance (the temptation is to believe we can control our lives) to Prayer
- From Popularity (the temptation is to believe we can be spectacular) to Ministry
- From Leading (the temptation is to believe we can be powerful) to Being Led.

Henry’s presentations offer a unique opportunity to pursue a spiritual journey in which unceasing prayer and committed service can be lived as the two inseparable qualities of the call of Jesus to discipleship. These three spiritual pillars on Christian discipleship will be the basis for a Sunday morning preaching series beginning Sunday, September 8th, 2002.

In the Name of Jesus

Pastor Marv

**THE DEADLINE FOR  
ARTICLES FOR THE NEXT  
CHRONICLE  
IS FRIDAY, AUGUST 23rd, 2002!!!**

WE WELCOME YOU!

### HIGHLIGHTS

...FROM THE PASTOR,  
*On Page 1...*

IMPORTANT INFO  
*On page 2...*

VITAL NEWS  
*On page 3 & 4...*

CLCW Stewardship Corner  
*On page 4...*

GGT Update  
*On page 4...*

OTHER INFORMATION  
*On page 5...*

SMALL GROUPS  
*On page 6 & 7...*

**A CERTIFICATE OF THANKS TO  
CELCA FOR HELPING TO START A  
NEW ELCA CHURCH IN FLORIDA!**



## PATHFINDERS

Children ages 3-18 will find Pathfinders to be fun educational, and filled with the love of Jesus. Explore stories of the Bible through music, crafts, journaling, drama, prayer and more. In the fall, Pathfinders will meet **every Sunday at 10:15** in the upstairs classrooms of the Education building. **Contact Krista Vingelis until August 11th, or Jennifer Hoyt, starting August 12, at 301-652-5160 for more info. STARTING DATES TBA**

**With gratitude to God for your partnership in planting  
the Church of Jesus Christ, we commend**

*Christ Evangelical Lutheran Church  
Bethesda, Maryland*

Mission Founder of a new ELCA congregation

*Joyful Servants  
Tampa, Florida*



*Mark S. Hanson*  
The Rev. Mark S. Hanson, Presiding Bishop, ELCA

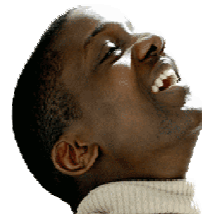
*Richard G. Magnus*  
The Rev. Richard Magnus, Division for Outreach

July 8, 2002 Date

*Mission Founders*

## The Alpha course

*An opportunity to explore the meaning of life*



**STARTING SEPTEMBER 5,  
MEETS WEEKLY ON:**

**THURSDAYS 6:30 PM**  
(Hospitality Room)

**SUNDAYS 10:15 AM**  
(Luther Hall)

**SUNDAYS 4:00 PM**  
(Upstairs Carpeted Room)

(\*\*\*NO MEETINGS IN AUGUST)

**CHRIST LUTHERAN CHURCH**  
8011 Old Georgetown Rd.  
Bethesda, MD 20814  
301-652-5160  
www.heartmindsoul.com  
clcbethesda@heartmindsoul.com



## MARRIAGE AND FAMILY MINISTRIES

### 6 Flags Amusement Parks

– Discount coupons have been made available to CLC for families interested in making a family day of it this summer. For more info, call Krista at 301-652-5160 or email at [kristaclc@heartmindsoul.com](mailto:kristaclc@heartmindsoul.com).

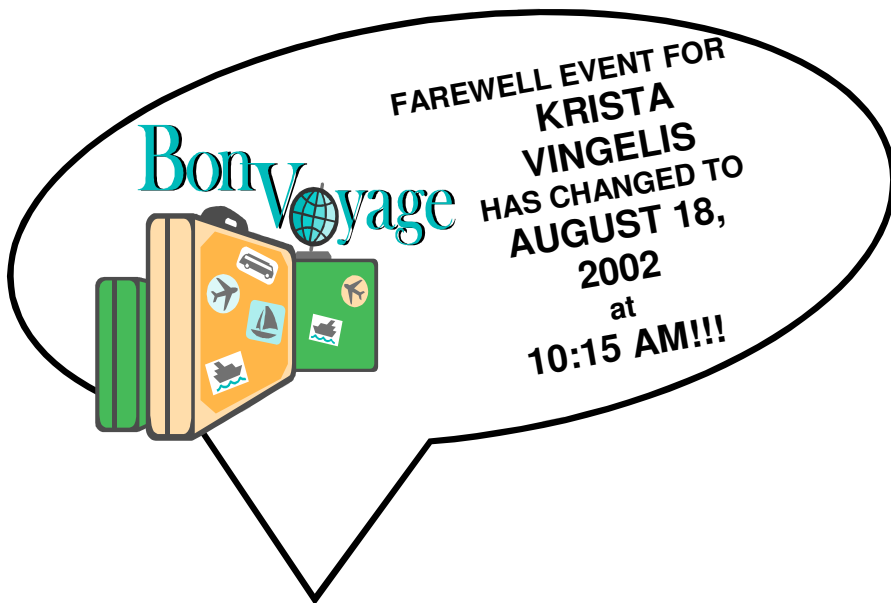
## REMAINDER OF SUMMER WORSHIP SCHEDULE

Christ Lutheran Church remains in a Summer Schedule as follows:

- 9:15 AM Praise Worship Service w/Communion**  
(Contemporary Service, in Sanctuary)  
**NO Adult Bible Study in August** (resumes in September in Upstairs Carpeted Classroom)
- 10:15 AM NO Bagels & Bible Study in August** (resumes on Sunday, Sept. 8th, in Hospitality Room)  
**NO ALPHA Course in August** (resumes on Sunday, Sept. 8th)
- 11:15 AM Traditional Worship w/Communion**  
(Sanctuary)

**NOTE: The 1st Sundays in August, & September, August 4th, and September 1st, respectively, there will be 1 Blended Worship Service at 9:15 AM.**

# VITAL NEWS



Be sure to be here on **Sunday, August 18, 2002**. That day, the church will host a special FAREWELL PARTY for Krista Vingelis, our Minister of Family and Community Care, as she will be leaving Washington, D.C. for Seminary. The party will take place during the hour between the two morning worship services. (**Approx 10:15 AM to 11:15 AM**) We are asking those who come to 9:15 AM WORSHIP to stick around for the party and those who come to 11:15 WORSHIP to come an hour early to join in this special social hour and offer special thanks and appreciation for Krista's work here at CLC.

The FAREWELL EVENT was originally planned for August 11th, but Pastor Marv will be out of town because of the death of his father-in-law; however, he will return to CLC for the event on August 18th.

**C**ongratulations to newly elected

Council members, Dottie Davis, Barry Lemley, Elke Womack, & Marta Woodward and Carl Seils for Mission Endowment Fund Board.

New officers of Church Council are

**Tim Bradley:** *President*

**Sanna Solem:** *Vice President*

**Laurie Heinecke:** *Secretary*

**Barry Lemley:** *Treasurer*

Please keep these new leaders, as well as all church leadership, in prayer for His Word, wisdom, and guidance, as they serve Him at Christ Lutheran Church.

## MISSION TO GUATEMALA MI REFUGIO

Are you between the ages of 14 and death? Are you currently worshipping with us or are you a friend of someone who is? Are you called to serve? Called to help the poor? Called to help children? If you answered yes to any or all of these questions then you should join us for a mission experience to Guatemala City and the children of Mi Refugio, a Christian school for the poor. The mission is scheduled for Friday, Oct. 18<sup>th</sup> through Sunday, Oct. 27<sup>th</sup>, 2002. Initial cost estimates are \$675-\$775 per person. Valid passports, immunizations, registration form, and participation in 3 pre-mission planning sessions are required. Because of flight arrangements, all registrations are due with a non-refundable deposit of \$200 by Aug. 15<sup>th</sup>. The remainder will be due in two installments by Sept. 15<sup>th</sup> and Oct. 1<sup>st</sup>. For questions or to pick up a registration/information packet, speak to Krista Vingelis at 301-652-5160 or 240-401-3775.

### BLENDED WORSHIP

#### SCHEDULE

ON AUGUST 4th &  
SEPTEMBER 1st

1 BLENDED WORSHIP  
9:15 AM

### FINANCIAL UPDATE

Financial status through June of 2002 will be distributed in a separate mailing.



## CELC welcomes

**Jennifer Hoyt** as our newest staff person. The Church Council selected Jennifer as our Minister of Family and Community Care. Krista Vingelis is leaving this position in August to attend Luther Seminary. Jennifer will begin work with us on August 10, 2002.

Jennifer was raised in the Rockville-Bethesda area, just down the road from Christ Lutheran, by her mother Sandy, a former Montgomery County elementary school teacher, and father Bob, a CPA who works from home. Her family, including younger brothers, Justin, 20, and Jason, 15, attended St. Andrew's United

Methodist Church near Annapolis, where Jennifer taught Vacation Bible School in the summers.

She graduated from Walter Johnson High School in 1996 and went on to the University of Richmond, where she received a degree in journalism and political science in May 2000. After graduating from college, she did a six-month reporting internship in the Houston Chronicle's Washington bureau before going to work for the Associated Press in February 2001.

Jennifer began attending Christ Lutheran in early 2001 and has been on the Fisherman Ministries youth development team for the past year. She is thrilled for the opportunity to serve the Lord through the children and families at Christ Lutheran.

Additionally, Jennifer is an avid reader and journal-writer who loves to water ski, ride her bike and do step aerobics. She is engaged to be married to Brian Tessneer next May.

## CLCW Stewardship Corner

I am happy to report the following:

In April, the Christ Lutheran Church Women contributed \$600.00 to Lutheran World Relief to aid Afghanistan/Central Asia. LWR is working with ACT International, the interchurch emergency alliance, in providing assistance to displaced people and refugees in Afghanistan, Pakistan and Iran with food, shelter materials, clothing, bedding and water.

In May, our circles collected \$350.00 along with several items including, bible books, construction paper, scissors and magic markers for Southeast Ministry's Traveling Vacation Bible school to be held in July.

At our June circle meetings, we collected articles to be included in the In-Kindness packets taken to the Triennial Gathering of the ELCA Women in Philadelphia, July 8-14, 2002. The packets will be distributed to refugees and other women and children in need in the Philadelphia area

A big thank-you to everyone for all the support you have provided for these projects.

Jackie Clapp



## GGT UPDATE

As discussed in the annual congregational meeting, the Graceful Growing Together stewardship campaign is alive and well – and in need of your support. During the past six months, our focus has narrowed to two distinct tasks, one addressing the here and now, and one addressing the future of our church.

First, the “here and now” task is to raise funds for sanctuary beautification and restoration. From paint to pews, there are lots of improvements that must be made. If you are interested in giving your input, or helping us get our hands around just what needs to be done, please let me know.

Second, the future task is to coordinate with Lutheran Social Services to better address space use on church property. We are blessed with a great location which we believe is under utilized. Lutheran Social Services has ideas and experience on expanding in the areas of education (elementary schools) and senior care (assisted living facilities). We need input and volunteers from the congregation who are interested in this area.

To date, we have roughly \$7,000 in GGT funds in excess of startup costs that can be utilized. All expenses and start up costs are behind us, so each and every dollar you give goes towards these exciting new opportunities. Please continue to give.

Mark E. Miller

# CONTEMPLATIVE PRAYER SERVICES

(spending time "In The Temple" of silence with God)  
**SUNDAYS at 6 P.M. in the SANCTUARY**  
**DATES TBA**

The next Contemplative Prayer Service will resume in September 2002, and continue through May 2003. These Contemplative Prayer Services will be held two Sundays each month.

Contemplation is NOT something we achieve, it is something we allow. WE ALLOW ourselves to SPEND TIME WITH GOD, just as we allow ourselves to spend time with anyone we deeply love. The Latin word CONTEMPLARE literally means "IN THE TEMPLE." Contemplation, or CONTEMPLATIVE PRAYER, is a way of spending time "IN THE TEMPLE" OF SILENCE, WITH GOD.

**Contemplative prayer is a PRAYER OF RECEPTIVE, LISTENING SILENCE**. The emphasis is **not** on technique—on "mastering silence"—**but on simply being present, in relationship, with the greater, uncreated presence of the Divine**

To enter into contemplative prayer requires nothing more than a commitment to spend time in silence, offering the time to God. It is time spent listening gently for "God's soft whisper". **God patiently waits for the times when we let go of our need to control, and WE ALLOW THE SILENCE to wash throughout our consciousness like a cleansing wave of crystal water.** God comes to us to be in relationship, not just to make us feel good. So contemplation ultimately nurtures us at a level far deeper than feelings.



## PRAYER ROOM

Sundays  
 9 A.M. to 12:30 P.M.  
 Second Floor of Luther Hall

1 Timothy 2:1...First of all, then, I urge that supplications, prayers, intercessions, and thanksgivings be made for everyone.

The Prayer Room will be open for you to spend time in quiet prayer and/or for a prayer minister to pray with you---for prayers of adoration and praise for God, healing, thanksgiving, confession, supplication, intercession for you, your loved ones, our church, community, and world.

"PRAYER...links all aspects of our lives to God. God is present in all of life...PRAYER is centering our life in our relationship with God in Christ and allowing that center to be present in all we do. . . Christ will be there for rest, guidance, joy, love, and hope. In PRAYER we present our whole life and the lives of others to God, so that God may be known and lives may be touched by GRACE." Richard J. Beckmen

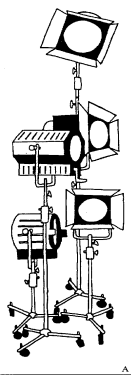
**Bethesda Cares'** clothing closet is running low on tee shirts and large size men's shoes. Please keep us in mind as you clean out your closets. Contact Blake at **301/907-9244** or bags may be dropped off at Bethesda Cares' office at 7728 Woodmont Avenue, or the clothing closet at St. John's Episcopal Church, Norwood Parish at the corner of Wisconsin Avenue and Bradley Lane. Please **DO NOT** drop clothes off at Christ Lutheran Church. Thank you.

### Montgomery

COMMUNITY TELEVISION, INC.

**Tired of what's on TV?  
 Your concerns are rarely covered?  
 Ready for a change of pace?**

**CLC needs people to get certified to help advertise our church on The Open Channel Cable 19! Please check out this opportunity!**



Imagine producing a quality TV program with professional digital equipment and having the chance to cablecast your show for **free** on The Open Channel Cable 19!

Registration now underway for **television production workshops** at Montgomery Community Television.

Available to all County residents & organizations, the 10-week series is a hands-on program teaching the fundamentals of professional television production.

Classes begin September 11, 14 & 19.

**Montgomery County** residents, as individuals or as representatives of their organizations, have the opportunity to make their own television shows at Montgomery Community Television (MCT). Workshops, using professional television production equipment, begin the week of Sept. 9.

Everyone successfully completing certification workshops is eligible to use MCT's equipment to create their own programs and have them shown, for free, on The Open Channel, Cable 19.

Workshop enrollment is open to any Montgomery County resident age 13 or older, or to representatives of local nonprofit organizations. For registration kits and more information, call the MCT Training Department at 301-517-8620.

Montgomery Community Television, incorporated in 1984, is the independent, nonprofit organization committed to serving the Montgomery County community with professional quality television training, production and programming. MCT operates The Montgomery Channel 21 as well as The Open Channel 19.

# SMALL GROUP MINISTRIES

## SPIRITUAL, FAITH-BASED OPPORTUNITIES

### **for Christ Lutheran Church and Community**

God has provided many resources and opportunities for all His children/people for spiritual formation and growth. Listed below are small groups which you are warmly invited to participate in. For more information or to register for any events, now or for future listings, please call **301-452-2491** or **301-652-5160, Ext. 3 Florence Heacock.**

## FOR ADULTS

### ADULT BIBLE CLASS

Resumes in September

Meets every **Sunday** at **9:15 AM** in the **Large Carpeted Classroom** on the **2nd floor** of the Education Building

### WEEKLY WEDNESDAY MORNING ADULT BIBLE STUDY

Meets every **Wednesday** at **10:30 AM** in the **Hospitality Room**

**Contact: Pastor Marv at 301-652-5160 for more information.**



### ALPHA COURSE

**NOTE: Resumes Thursday, September 5th, 2002 (NO MEETINGS IN AUGUST)**

Meets every **Sunday** at **10:15 AM** in the Luther Hall. And **4 PM** in Upstairs Carpeted Classroom

Meets every **Thursday** at **6:30 PM** in the Hospitality Room

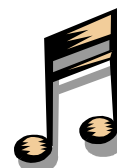
**(Additional times and dates TBA. Children are welcome. Daycare will be provided.)**



### ADULT CHOIR

Rehearses every Thursday from 7:30—9:00 PM and Sunday at 10:15 AM, beginning Thursday, September 5th, 2002.

Sings at 11:15 AM Service. **Contact Jin Sun Cho, Minister of Music, at 301-652-5160 or e-mail her at jschokim@yahoo.com** **NOTE: Choir will be on summer break from June until the end of August.**



### GRACEFUL GROWING TOGETHER (GGT)

For more information on Prayer/Bible Study Small Groups and Work Sessions

**Contact: Mark Miller at 202-331-3175 (Office) and 301-718-4655 (Home), millm@gtlaw.com (E-mail)**

### PRAYER AND TEDDY BEAR MINISTRIES

For your prayers and prayer bear missions, there are baskets in the **Narthex** and the **Collonade** for **“Prayer Requests”** and **“Prayer Bears”**. Prayer requests will be prayed for at the Sunday evening Prayer Services. Please pray for and indicate the mission for your Prayer Bear, so it will be sent/placed in touching lives and hearts for God. The scripture basis for CLC's Teddy Bear Ministry are 1 Corinthians 13:1 thru 13 and 1 Corinthians 12:4 thru 11... "And the greatest of these is LOVE".

### FOR SINGLE ADULTS

**Crab Feast:** the annual crab feast on Saturday, August 24 at the Washington Sailing Marina on the G.W. Parkway, ½ mile south of National Airport. Cost: \$10. 11 a.m. —4 p.m.;

children are free. Bring a salad to share and a lawn chair.

Pay on site. **RSVP at (301) 499-6222 or mendekoch@aol.com.**

Sponsored by Lutheran Single Adult Committee

**(MORE ON PAGE 7)**

# SMALL GROUP MINISTRIES

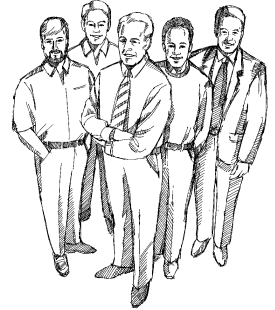
## (CONTINUED)

### FOR MEN

#### 1. Saturday, August 24, 2002

**Men's Master Builders Small Group Ministry Breakfast**  
**9:00 AM Hospitality Room**

**MEN**  
*Active!*



#### 2. Promise Keepers Events

Watch for upcoming events, such as "Storm the Gates" Conferences, which are nationwide events hosted by Promise Keepers to provide a prayerful, Biblically-based, spiritual event for youth, fathers, and mentors to come together to cast a vision, ignite passion, and build the capacity to become Godly men.

### FOR WOMEN

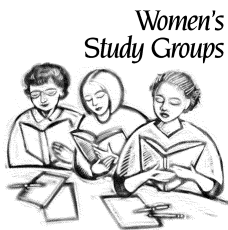
#### Women of Faith (Watch for upcoming events)

An interdenominational women's ministry committed to helping women of all faiths, religious background, age groups, and nationalities. Its mission is for every woman to grow in her understanding of God's unconditional love and grace for her personally. We trust that as a result, they will be encouraged, strengthened and unified in their commitment to Him. Women of Faith, through its conferences, provides a national forum for women to come together for spiritual guidance and inspiration. Assembling some of today's most dynamic and inspirational speakers, Women of Faith is dedicated to helping women learn to walk by faith and experience joy in the midst of their circumstances.



Women's Fellowship

**CLCW's Circle Groups** meet on a monthly basis, resuming in September, at the church and in homes. There are 5 groups that meet. Please contact **Wilma Christ** at **301-320-5127** or **Dottie Davis** at **301-598-9657** if you would like to join one of our circle groups, or just come to one of our meetings. The five groups and their schedules are as follows:



*Women's Study Groups*

- |                         |  |                              |
|-------------------------|--|------------------------------|
| <b>Alpha Circle:</b>    | <b>2nd Tuesday monthly at 12 Noon</b>    | <b>(in individual homes)</b> |
| <b>Rachael Circle:</b>  | <b>2nd Tuesday monthly at 7:30 PM</b>    | <b>(in individual homes)</b> |
| <b>Dorcas Circle:</b>   | <b>2nd Wednesday monthly at 12:30 PM</b> | <b>(church)</b>              |
| <b>Martha Circle:</b>   | <b>3rd Tuesday monthly at 10 AM</b>      | <b>(church)</b>              |
| <b>Saturday Circle:</b> | <b>1st Saturday monthly at 9:30 AM</b>   | <b>(in individual homes)</b> |

**CONNECT WITH WOMEN NEAR AND FAR WHO SHARE COMMON THREADS OF FAITH AND COMMITMENT TO BUILDING THE KINGDOM OF GOD**

### FOR YOUTH & CHILDREN

More information coming soon! Watch for Fall Schedule. Watch for Sunday School (Pathfinders) and Youth activities events!

# Christ Lutheran Church

8011 Old Georgetown Road  
Bethesda, MD 20814-2476

Email: [clcbethesda@heartmindsoul.com](mailto:clcbethesda@heartmindsoul.com)  
Office: 301-652-5160 Fax - 301-652-2301  
Website: [www.heartmindsoul.com](http://www.heartmindsoul.com)



FAREWELL EVENT FOR  
KRISTA VINGELIS  
HAS CHANGED TO  
AUGUST 18, 2002  
at  
10:15 AM!!!  
(DETAILS ON PAGE 3)

## OUR MISSION STATEMENT

The mission of Christ Lutheran Church is to make disciples of Jesus Christ; to transform all people into fully devoted followers of Jesus Christ.

## OUR VISION STATEMENT

- ◆ Our vision is to be a community of believers making and baptizing disciples so that Christ's forgiveness and healing can be accomplished in the world.
- ◆ We are a community of believers because God wants us to be something together and represent God with our unified diversity. Our vision is to further God's Kingdom in our midst.

## CHURCH STAFF

**Rev. Marvin Tollefson**  
*Pastor*

**Krista Vingelis**

*Current Minister of Family & Community Care*

**Jennifer Hoyt**

*Incoming Minister of Family & Community Care*

**Jin Sun Cho**

*Organist & Minister of Music*

**Richard Czypinski**

*Office Manager*

**Florence Heacock**

*Small Groups Coordinator*

## CHURCH COUNCIL

**Tim Bradley: President**

**Sanna Solem: Vice President**

**Laurie Heinecke: Secretary**

**Barry Lemley: Treasurer**

**Dottie Davis**

**Jennifer Walker**

**Marta Woodward**

**Elke Womack**

**Grace Lloyd-Davies**

**Eugene Saylor**

**Priscilla Lotsberg**