

# The Connection

Volume 77,  
Issue 9

Christ Lutheran Church, Bethesda

September  
2011

## OUR MISSION STATEMENT

The mission of Christ Evangelical Lutheran Church is to make disciples of Jesus Christ and to transform all people into fully devoted followers of Jesus Christ.

## OUR VISION STATEMENT

Christ Evangelical Lutheran Church exists to

**Welcome** people to faith;

**Equip** people with a faith that works in real life;

**Send** people into **service** into a hostile and hurting world in Jesus' name.

## GREAT COMMANDMENT

"You shall love the Lord your God with all your heart, and with all your soul, and with all your mind.... Love your neighbor as yourself" (Matthew 22:37-39)

## GREAT COMMISSION

"Go and make disciples of all nations, baptizing them in the name of the Father and of the Son and of the Holy Spirit." (Matthew 28:19)

## Annual Community Festival Sunday, September 11

12:30-2:30 pm

**FREE fun for all!**



Moonbounce and games outside!

Food and ministry information inside!

Invite your neighbors and friends for an afternoon of fun!

## SEPTEMBER HIGHLIGHTS

Development Update. . . . . 3

Call Committee. . . . . 4

Prayer Ministry. . . . . 5

Small Groups. . . . . 6

Women's Group. . . . . 8

Men's Group. . . . . 9

# IN AND AROUND CELC

## WELCOME TO CELC!

New to Christ Evangelical Lutheran Church? Want to know more about our faith community? Please email the church, [clc@heartmindsoul.com](mailto:clc@heartmindsoul.com), to begin receiving our weekly e-newsletter.



## HOLY COMMUNION INFORMATION



The sacrament of Holy Communion is offered at both worship services, every Sunday morning. We offer traditional wine and grape juice.

Two crystal chalices are used; the grape juice is white and the communion wine is dark red. If you would like more information about communion, contact Pastor Jon.

## GREET AND TREAT MINISTRY

Thank you to all who serve in our greet and treat ministry, which provides goodies and smiling faces to greet worshippers each Sunday morning! To sign up, contact George Wenchel ([george@wenchel.com](mailto:george@wenchel.com)).

facebook

Find us on facebook:  
Christ Lutheran Church

twitter™

Follow us on twitter:  
[@christbethesda](https://twitter.com/christbethesda)

## BEER AND BIBLE STUDY

Join Pastor Jon at 7:00 pm Wednesday evenings. We will gather at Rock Bottom Restaurant & Brewery, 7900 Norfolk Avenue, for an evening of Bible study and fellowship.

## FAIR TRADE COFFEE

Purchases of Fair Trade coffee provides the means for small farmers to make enough money to support themselves while using the premiums to improve their standard of living.

Here's what's available:

- pillow packets (pre-ground) of Regular (Mind Body Soul) and Decaf (Columbian). Each pillow packet makes one pot (about 64 oz) of coffee (\$2)
- a variety of whole bean and ground regular and decaf coffees (\$8 for 12-oz pkg; \$9 for 16-oz pkg and decaf)



To learn more about this coffee, visit [www.equalexchange.com](http://www.equalexchange.com). Proceeds from the coffee will be given to support the ministry of Mi Refugio, the school for impoverished children in Guatemala. Please contact Lisa Bente ([carpedm28@verizon.net](mailto:carpedm28@verizon.net)).

## THE TABLE MINISTRY

*Why The Table and Neighborhood Life?* Neighborhood Life is the optimal place for life change similar to the experiences of the early church where spiritual development and outreach happened right where you live... by building genuine friendships with both CELC and non-CELC neighbors; by growing spiritually as a natural part of your everyday life; by responding to the needs of others in your neighborhood and beyond.

If you would like to participate in a Table group, please contact Sanna Solem ([sannasolem@gmail.com](mailto:sannasolem@gmail.com)), Florence Heacock ([flohea@heartmindsoul.com](mailto:flohea@heartmindsoul.com)), or Larry Goolsby ([goolsbyl@comcast.net](mailto:goolsbyl@comcast.net)).

# Development Update

Further to the mission moment on Sunday August 14, 2011, the Local Map Amendment (LMA) Appeal process was held at Circuit Court in Rockville on August 11, 2011 with Judge Thomas Craven presiding. Appeal was brought against the Montgomery County Council LMA zoning decision by Sole Petitioner, Herbert Estreicher, resident of 8008 Glenbrook Road, Bethesda, who presented his own case. The matter was defended by Clifford Royalty, Attorney for the County Council for Montgomery County and CELC's Land Use Attorney, Stephen Kaufman from Linowes and Blocher. A number of CELC congregation members were also in attendance as observers. In a hearing of almost 2 hours, the judge gave the appellant ample hearing of his issues as well as hearing the comments of the County Council lawyer and the church's lawyer.

After reviewing the evidence and facts, Judge Craven then ruled in favor of the County Council decision and Christ Evangelical Lutheran Church and denied the appeal by the sole petitioner of the October 26, 2010 County Council approval of PD-44 for development of our church site. He basically ruled that there were no errors of law and that the County Council (acting as

District Council on zoning issues) had sufficient facts and basis for its PD-44 decision so that it was not acting arbitrarily or capriciously. The sole petitioner has 30 days from the written decision to determine whether he will appeal the August 11, 2011 Circuit Court judgment to the Court of Special Appeals.

Next development steps were discussed and approved at the August 17, 2011 Church Council meeting. These tasks will be further detailed and implemented at the Development Steering Committee (DSC) and the Graceful Growing Together (GGT) meetings set for September 1, 2011. CELC's Council has asked that the DSC provide a detailed update to the Congregation on the development project in late September.

Thank you for all the support and prayers along the way. Please don't hesitate to ask any members of the DSC, GGT or CELC Council for more information.

*Barry Lemley for the CELC Development Steering Committee (DSC)*

## Faith Formation Opportunities

Our Sunday morning Faith Formation Opportunities for children and youth begin anew on Sunday, September 18. Please join us every Sunday at 10:20!

Our Sunday morning adventure for kids ages 3-elementary school teaches children the timeless truths of the Bible in a way that engages and excites kids! We help children know, love, and follow Jesus in a fun way. We gather at 10:20 upstairs for a time of singing, sharing, and learning all about Jesus' love for us! Laura North, minister of children and families (301-652-5160 or [laura@heartmindsoul.com](mailto:laura@heartmindsoul.com)) shares with the children.



If your age is between 11 and 111 and you desire to grow, you are invited to participate in the fun-filled (and frequently educational) Head-to-Heart sessions every Sunday morning from 10:20 to 11:00 in the sanctuary.

We have fun using music, game shows, skits, PowerPoint presentations, and more to open dialogues about faith in a dynamic way. Currently we are experiencing the New Testament. If you have any questions, contact Steve North ([steve.celc@gmail.com](mailto:steve.celc@gmail.com)).

# Community Volunteer Opportunities

## Interfaith Clothing Center



Join us at the Interfaith Clothing Center, 751 Twinbrook Parkway, Rockville, MD 20851, 11:00 am-1:00 pm, followed by lunch. We meet monthly.

The Interfaith Clothing Center serves about 14,000 individuals every year. Clients come from all corners of the County and are young and old, male and female, single and married, and span all races and religions. They are working poor, homeless, disabled, immigrants, parolees, and seniors. To volunteer, contact Florence (flohea@heartmindsoul.com).

Upcoming Dates: *September 10, October 8, November 12, December 10*

## Backpack Ministry

### *Less than three months to go!*

Our mission is to provide 100 filled backpacks to the Homeless right in our midst, served by Bethesda Cares with their lunch program. Bethesda Cares will distribute our donated backpacks to the men, women, and children who attend their annual Thanksgiving dinner—this year on November 24. Bring your donations to the church between now and early November. If you have any questions, please call or email Lisa Bente (301-881-0578 or carpedm28@verizon.net) or Sanna Solem (301-571-0050 or sannasolem@gmail.com).

*Men—60 each:* backpack, Bible, towel, wash cloth, scarf or hat, gloves, socks, pen/note pad, toothbrush/toothpaste; *Women—20 each:* backpack, Bible, towel, washcloth, scarf or hat, gloves, socks, fleece, pen/note pad, toothbrush/toothpaste; *Boys and Girls—10 each:* backpack, Bible storybook, coloring book, crayons, washcloth, scarf or hat, gloves, fleece, socks, pencil/note pad, toothbrush/toothpaste

## Call Committee Update

The Call Committee and Church Council members met on August 17th to discuss the timing of the next steps in the call process. When the decision is finalized, the Call Committee will inform the synod of our desired time frame for the synod to put together a list of pastoral candidates for us to interview.

Remember that the information we collected and summarized from our congregation interview process is available in our Ministry Site Profile in printed or electronic (PDF) format. Please request a copy from the church office.

*Thanks for your support,  
Steve North and the Call Committee*

# Prayer Ministry

## Alpha Prayer Study



The ALPHA Prayer Ministry Training course is for anyone who wants to learn how to give and receive in this crucial area of ministry. It covers various types of prayer including helping someone become a Christian, praying for someone to be filled with the Holy Spirit, praying for healing, and listening to God.

This course will equip you to become more comfortable to share in praying with friends and family, and equip you to be part of your faith community's ministry teams, as well as Alpha course leaders.

Look for more information this fall—coming in October

For questions or information, please contact Dave Lambert (davidrobertlambert@alphausa.org), Sanna Solem (sannasolem@gmail.com), Larry Goolsby (goolsbycl@comcast.net), or Florence Heacock (flohea@heartminsoul.com).

### **Open Prayer Mornings**

*(silent, contemplative prayer time for all people)*

September 24  
October 22  
November 12  
December 3

10:00 am-Noon, Sanctuary  
Selected Saturdays

## Taize Prayer Services

third Monday of each month  
(unless otherwise noted)

7:15-8:00 pm  
In the Sanctuary

September 19  
October 17  
November 14  
December 12

The Taizé Community is an ecumenical Christian monastic order in Taizé, France, founded in 1940. The community has become one of the world's most important sites of different cultures and different Christian traditions. The Taizé community has sought to demonstrate this in the music and prayers, where songs are sung in many languages, and have included chants and icons from the Eastern Orthodox tradition. Through the Taizé community's ecumenical outlook, they are encouraged to live in the spirit of kindness, simplicity and reconciliation. The music emphasizes simple phrases, usually lines from Psalms or other pieces of Scripture, repeated and sometimes also sung in canon.

# Small Group Ministries

Small Groups are spiritual communities where people share their thoughts, feelings, struggles, and joys, while applying Biblical principles in their lives. Small Groups grow in trusting relationships, and participants agree what is shared will remain confidential and differences of opinions are respected. Small Groups are spiritual communities where life transformation occurs through the love and Word of God, Jesus Christ, and the Holy Spirit, in relationships with His people.



**“Challenging Lifestyles”**—A dynamic Sunday morning experience for those wishing to learn, experience the lifestyle of Jesus



Christ in the 21st Century “challenging lifestyles.” A Biblical, prayerful, spiritual, nurturing, and supportive fellowship. Sundays, 10:15 am in The Upper Room. Contact Larry Goolsby (301-946-6479; lgoalsby@aphsa.org)

**“THRIVE”** for women seeking in-depth Bible study, fellowship, fun, outreach ministries meets September-July, 9:00-10:30 am on the 1st and 3rd Saturdays of each month. Breakfast included.



Contact Sanna Solem (sannasolem@gmail.com; 301-571-0050)

**“Men’s Master Builders”** meets for breakfast, Bible study, worship and fellowship at 9:00 am on the first Saturday of the month in the Hospitality Room. Contact Richard Cypinski (240-505-9505; richard@heartmindsoul.com) or Pastor Jon Hundt (pastorjon@heartmindsoul.com)

**“Monday Night Group”** meets weekly, 7:30-9:00 pm for study, prayer, fellowship in the Hospitality Room. Contact Steve North (steve.celc@gmail.com; 301-871-8161)

**“The Table Ministry”**—21st Century table experience, around the Table of Christ. Build genuine friendships in and out of CELC, grow spiritually on every day basis, and respond to the needs of others. Three-session series, with meal, in Host Homes. Contact: Florence Heacock (301-452-2491; flohea@heartmind-soul.com)

**“PrayerLife Ministry”**—meets for prayer, study, discussion, fellowship. PrayerLife outreach includes Taize Prayer Services, Open Prayer Mornings, and Alpha Prayer Course. Contact Florence Heacock (301-452-2491), Larry Goolsby (301-946-6479), or Dave Lambert (301-983-5034)

**“Martha Circle,”** a Bible study based on material provided by the Women of the ELCA, meets at

10:30 am on the 3rd Tuesday of each month. Contact Mary Merrick (301-571-7212)

**“Rachel Circle,”** a Bible study based on material provided by the Women of the ELCA, meets at 7:30 pm on the 2nd Tuesday of each month. Contact Alice Daniel (301-949-4688)

**“Women’s Healing Ministry”** —A 12-step, Christian recovery ministry based on the Beatitudes that uses eight principles as well as fellowship and God’s healing power to help heal hurts and overcome personal defects and replace them with life’s abundance. Contact Florence Heacock (flohea@heartmindsoul.com; 301-452-2491)



## Reasons to Join a Small Group:

- You will understand the Bible better in a small group.
- You will begin to really feel like part of God’s family.
- Prayer will become more meaningful to you.
- You will be able to handle times of crisis, change, and stress better.
- You will have a natural way to share Christ with friends, relatives, and work associates.
- You will develop leadership skills you never knew you had!
- You will deepen your understanding of worship.
- You will have fellowship, laughter, and fun

# Life—Love—Listening Community—Friendship

As the 2011-2012 Small Group and Christian education year opens, many opportunities will be offered for you to belong and experience *community*, friendship, learning and growing in the bible, life, listening and being listened to, caring and support of self and each other-- *friendship—community*.

The Bible says that *friendship—community*—is one of the richest experiences you can have in life. It makes your heart bigger, keeps you steady in a storm, ends your loneliness, is a key to personal transformation. God wired us up to know and be known, to love and be loved, to serve and be served, to celebrate and be celebrated.

Community – friendship--building is not easy. Very seldom can you just get plunked into a premade group and immediately experience community and friendship. There has to be an internal *want to* factor that is strong enough to be able to push you through the false starts and stops that are going to happen as you build community.

Community building and friendships usually start out with superficial conversation; and through it, trust and authenticity has to be built to grow into community and



friendship. Most of us get tired of surface relationships and wish we could move on, but then we ask “how”?

God says, “I have love of another kind. I have a lavish, uncontaminated, focused affection for you. I am thinking about you all the time. I am moving toward you with love all the time. I will be there for you all the time.” When

you open your heart up to the love of God through Christ, that love becomes the bedrock foundation out of which you move in your human relationships—friendship, community.

Remember – God is for us! In CELC’s small groups and Christian education classes, there are many opportunities for you to experience and grow in authentic, trusting, valuable, loving, caring, fun, long-lasting friendships and community--with the love of God. Join us at the Small Group Ministers’ tables for information and conversation about small group and Christian education opportunities Fall 2011 and Spring 2012, at CELC’s September 11 Community Festival.

*Florence Heacock*  
*Minister of Small Groups*

## Small Group Ministry Forum

Saturday, September 17  
10:30-Noon  
Luther Hall

# Community Connections

Fall 2011 – Spring 2012, CELC will host “Community Connection Breakfasts and Brunches” for you to share prayer, delicious food, fellowship, scripture discussion, caring for each other, and laughter. Many “small groups” in a community make up or develop a community – larger communities. Here at CELC, our small groups, inside and outside our faith community, make up the total of our larger community.

The following is the purpose of “Community Connection” opportunities:

- Think life-change—provide an opportunity for people to grow in current and future groups.
  - Cultivate relationships—relationships grow community spirit.
  - Promote participation—everyone is significant and valued. Encourage your family and friends to attend. During the breakfast, there will be a table for children to work on crafts or story time. This will allow parents to participate in the larger adult community and discussions.
  - Provide care—we provide care for attendees through healthy, pro-active community groups.
- Community Connection Breakfasts and Brunches

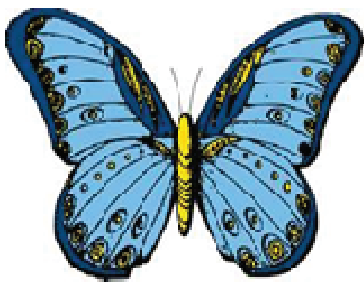
are a vehicle for church leaders, facilitators, everyone in the larger community to care for people within the church, and multiple ministries and church and local community.

- Multiply influence—this essential reminds everyone that multiplying their groups opens the door for others to participate in group life. If people simply multiply their groups every 18 months, they will have impacted almost 200 people in 6 years, another 4 years and they begin to experience the power of exponential growth. In a little over 10 years, 1 person will have personally influenced more than 1500 people. Group multiplication allows each person, facilitators, and leaders to impact more lives than they could any other way.

The next breakfast is February 12. All are welcome—family, friends, neighbors, and children. Remember, you are very important for God and the life of our faith community.

*Florence Heacock*  
*Minister of Small Groups*

## Thriving Women



During 2011, the women’s Bible study group, Thrive, has been studying the books of the Bible. Each time we meet for study, one person presents a study/discussion of a book of the Bible she has chosen to study.

We are women who look forward to getting together on the first and third Saturdays of the month to grow spiritually, while, at the same time, sharing each other’s company, life experiences, insights, prayers, and joys. Our studies vary, and we entertain all suggestions that help us develop as Christian women. At our next meeting, September 17, we will set a course for the 2011-2012 Christian Education year for the women’s Thrive group. Maybe there are books of the Bible you would like to read together?

Remember, we meet at the church, upstairs in the “cozy” prayer room II, first and third Saturdays of each month, except August, 9:00 – 10:30 am. It is easy to find. There will be a table outside set up with coffee and goodies—we are women who love our Lord, our time together...and breakfast!

# Master Builder's Men Ministry

We meet at 9:00 am on the first Saturday morning each month. Next meeting October 1, 2011

*We meet as friends for fellowship --- discussing Bible passages, recent experiences and ideas and building friendships as we share breakfast treats.*

Wonderful are the products of scientific efforts that we see all around us or use in our daily lives. Who could have dreamed about the power and scope for outreach in the "smart phone"? Who could have dreamed about how so much information -- on any subject -- is available at our fingertips through the internet? What wonders are still to unfold from the explorations of the universe through landings on the moon and Mars and the revelations through the Hubble telescope? Who would have thought that we could enjoy the arts of music and, museums through the electronic airways or travel almost at will to any exotic location on earth or under the sea?

Even as science opens up increasing wonders of the world we live in, our minds continue to turn to questions of "why" or "what purpose" in addition to "what" about our physical world and "how" it has evolved. In other words, our minds are curious about a "spiritual" world as well as a "physical" world. As a result there is a world of philosophers and theologians as well as a world of scientists to explore

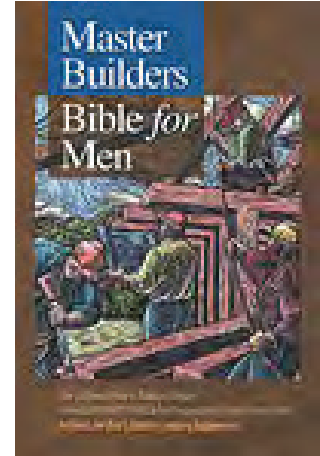
these eternal questions. And where can we turn to help ourselves deal with these questions of "purpose" and "why" when our minds seek to rise above our daily trials and tribulations?

We look to our Bible and find the following:

*"Render unto Caesar the things which are Caesar's, and unto God the things that are God's" Matthew 22:21.*

For me this passage helps me to believe that we live in two worlds simultaneously -- Caesar's, or the physical, and God's, or the spiritual. Our minds have that great power to comprehend both worlds. We can operate in both worlds. For the scientific world we operate with the scientific method of inquiry and discovery. For the spiritual world we operate through reason and practical morality. And in both there is reliance on faith to reach beyond the scientific hypotheses and moral observations to seek even further answers and guidance.

I read recently that experiments have shown babies have an inherent moral sense to help others. We are sensitive in how we behave morally with others around us in order to make a livable social structure out of disruptive forces. Do we have this moral understanding inherently or have we learned it, or both? Whatever your answer we see that moral behavior is right and necessary. Our minds so guide us.



So through the wonderful human mind we are able to reconcile our physical and our spiritual worlds. Science helps us understand the physical world and rational morality is essential to our social peace. We analyze the forces of energy in our physical world and we experience energy in the motivations of our spiritual world. What is the source of these energies in our lives? We sense that they relate to a higher power beyond the "Big Bang" of the universe and the energy in the human spirit. And that sense comes to us through our minds. Indeed, I can believe that the energy at work in the human mind emanates from a greater energy that we choose to name "God". Is the human mind in effect "the image of God?"

For more information please contact Richard Cypinski (Richard@heartmindsoul.com or 240-505-9505) or Pastor Jon (pastorjon@heartmindsoul.com).

*Ray Albright*



Sunday	Monday	Tuesday	Wednesday	Thursday	Friday	Saturday
<h1>September 2011</h1> <p><i>Please see page 6 of this newsletter for small group ministry opportunities throughout the week!</i></p>				1	2	3
4 10:15 am Blended Worship  11:15 Fellowship & Education	5	6	7 Beer & Bible Study 7:00 pm	8 Choir Rehearsal 8:00 pm	9	10 Interfaith Clothing Center 11:00-1:00
11 9:15 Contemporary 10:15 Christian Ed 11:15 Traditional 12:30-2:30 Community Festival	12 Monday Night Group 7:30 pm	13 Rachel Circle 7:30 pm	14 Beer & Bible Study 7:00 pm	15 Choir Rehearsal 8:00 pm	16	17
18 9:15 & 11:15 Worship  10:15 Christian Ed	19 Monday Night Group 7:30 pm	20 Martha Circle 10:30 am  <i>Connection Deadline 5 pm</i>	24 Beer & Bible Study 7:00 pm  <i>Council 7:00 pm</i>	22 Choir Rehearsal 8:00 pm	23	24
25 9:15 & 11:15 Worship  10:15 Christian Ed	29 Monday Night Group 7:30 pm	27	28 Beer & Bible Study 7:00 pm	29 Choir Rehearsal 8:00 pm	30	

## Christ Evangelical Lutheran Church

8011 Old Georgetown Road  
Bethesda, MD 20814  
Phone: 301-652-5160  
Fax: 301-652-2301  
www.heartmindsoul.com  
clc@heartmindsoul.com

Rev. Jonathan Hundt  
*Interim Senior Pastor*

Laura North  
*Minister of Children & Families  
Office Administrator*

Richard Cypinski  
*Minister of Music*

Ji-Na Kim  
*Organist*

Florence Heacock  
*Minister of Small Groups*

W. Karunaratne  
*Finance Administrator*

### Church Council

Lisa Stechschulte, president  
George Wenchel, vice president  
Tim Smith, secretary  
Alireza Motameni, treasurer

Marielle Arzac, Pastor Jon Hundt,  
Joanna Karpinski-Widzer,  
Bobby Larsen, Paula Mathis,  
Barry McVicker, Suzanne Parrott,  
and Nathan Sprenger



## SUNDAY MORNINGS

---

- 9:15 am** Contemporary Worship  
with Communion in the Sanctuary
- 10:15 am** Christian Education/Faith Formation  
for children and adults  
(see details inside newsletter)
- 11:15 am** Traditional Worship with Communion  
in the Sanctuary

### Mission of The Connection

*To communicate about disciple-making  
events and opportunities, all for the  
glory of God and to grow His Kingdom.*

Please contribute to The Connection! Let's share all the exciting ways God is at work here at Christ Lutheran Church! Questions? Please call Laura North at 301-652-5160 or email [laura@heartmindsoul.com](mailto:laura@heartmindsoul.com).

### October Connection Deadline

Submissions for the October issue of The Connection are due by 5:00 pm on **Tuesday, September 20**. Please email them to [laura@heartmindsoul.com](mailto:laura@heartmindsoul.com) or drop them off in Laura's office.

*New to CELC? Want to know more about our faith community?  
Please email [clc@heartmindsoul.com](mailto:clc@heartmindsoul.com)  
to begin receiving The Connection and also our weekly e-newsletter.*